



How to manage your tree view in Remote Desktop Manager



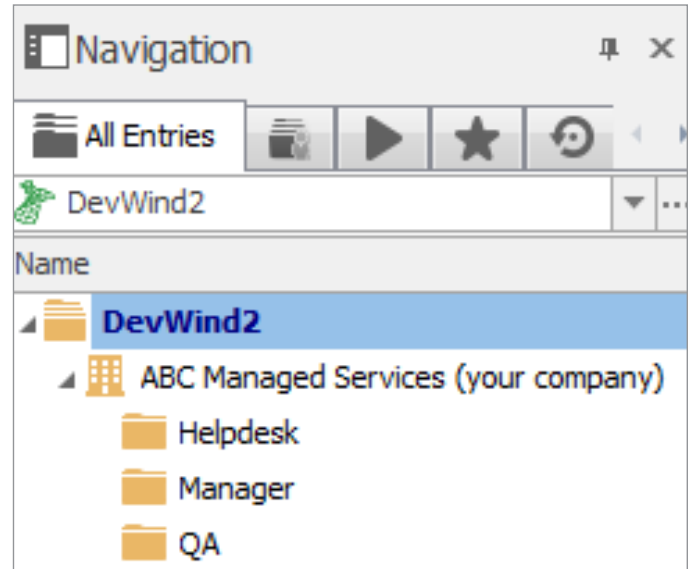
TIPS AND TRICKS THAT WILL HELP YOU EFFICIENTLY ORGANIZE YOUR GROUPS AND FOLDERS BY MANAGING YOUR TREE VIEW IN RDM

Don't we all love making our lives easier? Personally, I keep trying to win the lottery. I mean, if I could buy my very own private jet to travel the world, life would be such a breeze!

While it may not simplify things quite like winning the lottery, here are some tips and tricks that will help you efficiently organize your groups and folders by managing your tree view in RDM. Let's say you have a managed services company called "ABC Managed Services". Let's also say that you have a customer called "Windjammer" that has multiple sites in different cities.

Based on the above, you can create a Customer Group/ Folder, as well as subfolders for each city. Next, you can create another folder for your own infrastructure, and add subfolders for your different teams.

Here's how the structure would look in your tree view:



Since our security system is applied to the whole branch, all entries below a folder are indeed protected by the security group that you set on that folder.

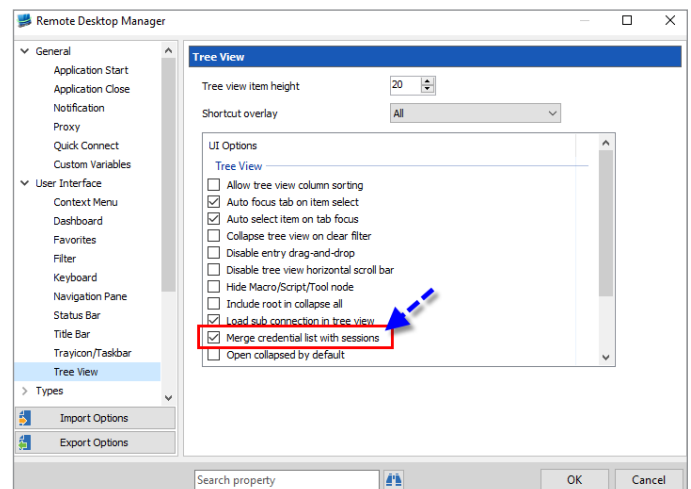
Making good use of inheritance

Our security is inherited, but not the credentials, this you must put in place deliberately. You simply need to adjust the entries' **Credentials** setting to **inherited** and to specify credentials at the folder level. Note that if you have a deep structure with subfolders you must also set the same setting, this ensures that the inheritance chain is not broken. Note that you can also inherit VPN settings in the same manner, which means that a customer/site based folder structure makes even more sense.

If you intend to use inheritance extensively, we recommend you use our [Default settings](#) feature for entries that you will create in the future. For the existing ones, use our [Batch Edit](#) feature to fix settings in one fell swoop.

Grouping Credentials

You may have also noticed that your **Sessions**, **Credentials** and **Macro/Script/Tools** are all separated in your tree view. If you have a large organization, we strongly recommend enabling the option **Merge Credential list with sessions in File – Options – User Interface – Tree View**. This will group your credentials with the sessions.



Now...if only I could afford that private jet so that everything in my life could be as easy as using RDM! As always, please let us know your thoughts by using the comment feature of the blog. You can also visit our forums to get help and submit feature requests, you can find them [here](#).