



New in Remote Desktop Manager 13.5: Quick Access Features

Devolutions

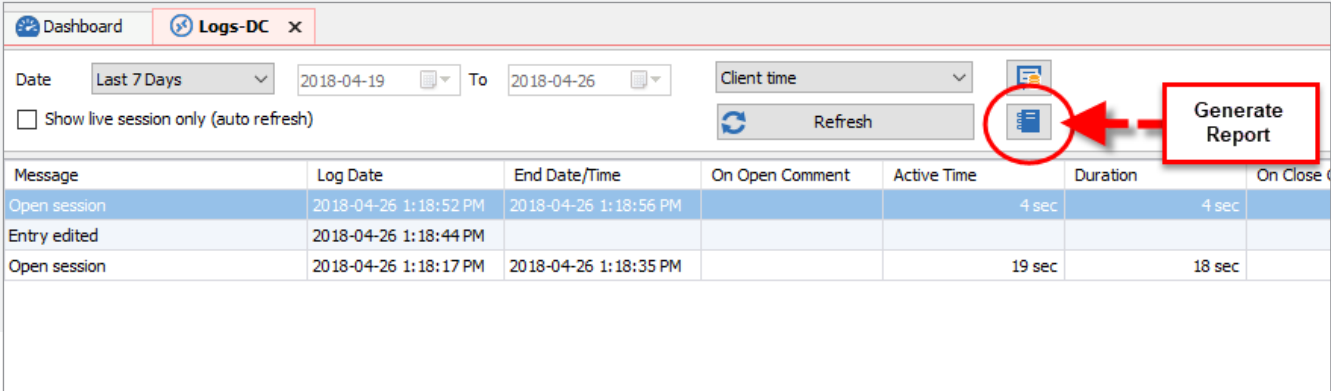
We're on a roll highlighting new features in Remote Desktop Manager 13.5, and it looks as though all of my blogs this month are going to be about this topic — which is fine with me, because there's plenty to cover!

Today, I'll focus on four new or improved quick access features that I think you're all going to enjoy.

Generate Report

You can easily and quickly generate a report directly from your entry log. The entry log allows for viewing sessions activity logs like: start/end time, session duration, open/close comments, and if any users performed any actions (and if so, what time). Here's how to create a report:

- 1 Right click on your entry in the treeview
- 2 Select **View - Logs**
- 3 In the Entry Log tab, click **Generate Report**
- 4 Enter the details you wish to generate in your report and click on **OK**



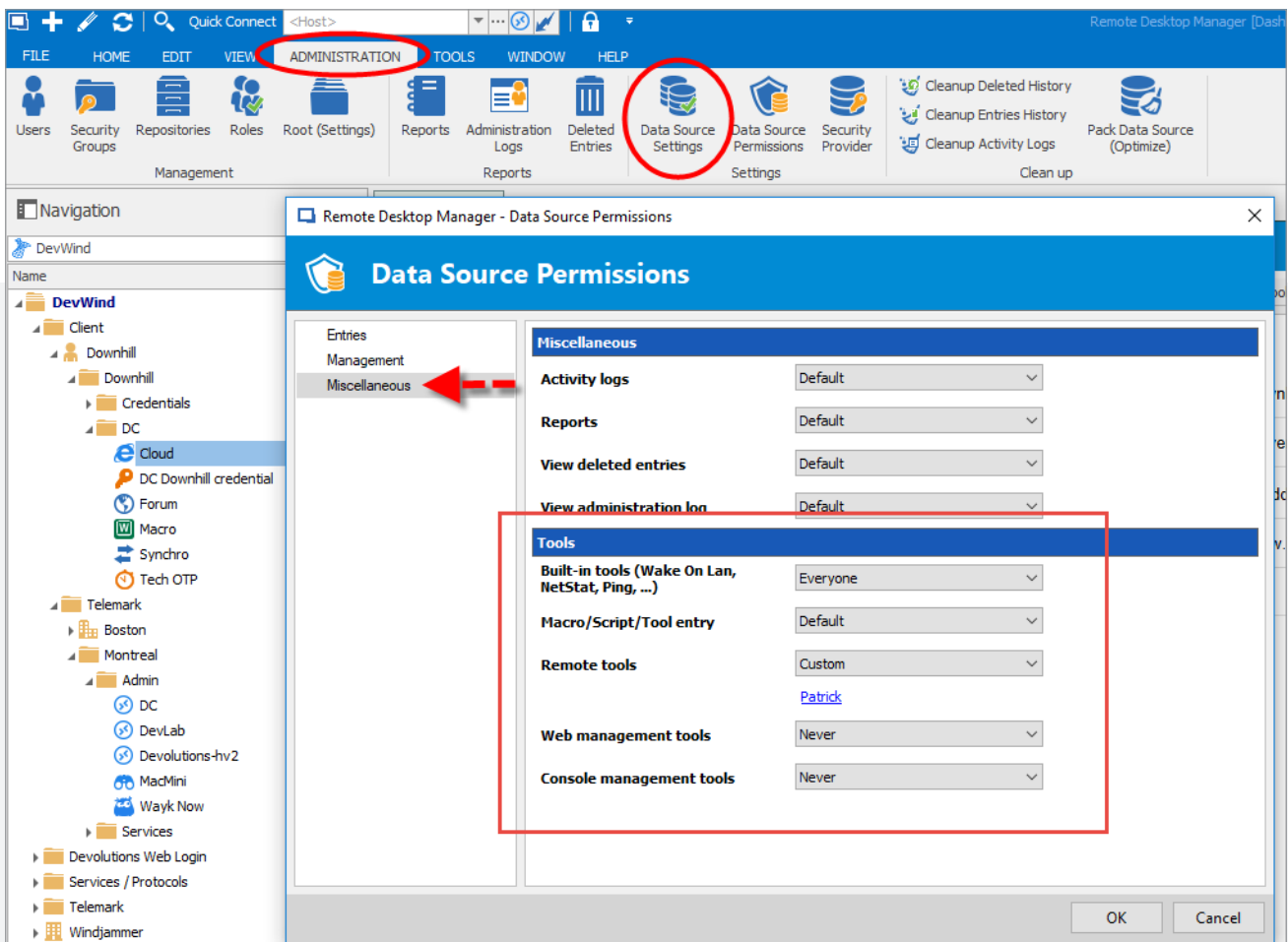
The screenshot shows the 'Logs-DC' interface. At the top, there are tabs for 'Dashboard' and 'Logs-DC'. Below the tabs, there are filters for 'Date' (Last 7 Days, 2018-04-19 to 2018-04-26), 'Client time', and a 'Refresh' button. A 'Show live session only (auto refresh)' checkbox is also present. The main area contains a table with columns: Message, Log Date, End Date/Time, On Open Comment, Active Time, Duration, and On Close. The table has three rows: 'Open session' (2018-04-26 1:18:52 PM to 1:18:56 PM, 4 sec), 'Entry edited' (2018-04-26 1:18:44 PM), and 'Open session' (2018-04-26 1:18:17 PM to 1:18:35 PM, 19 sec). A red box highlights the 'Generate Report' button, which is a document icon with a plus sign, and a red arrow points to it from the right.

Message	Log Date	End Date/Time	On Open Comment	Active Time	Duration	On Close
Open session	2018-04-26 1:18:52 PM	2018-04-26 1:18:56 PM			4 sec	4 sec
Entry edited	2018-04-26 1:18:44 PM					
Open session	2018-04-26 1:18:17 PM	2018-04-26 1:18:35 PM			19 sec	18 sec

Data Source Permissions

Data Source Permissions are very useful for granting administrative permissions to standard users, but without making them administrators. You can also manage permissions on entries, rights management, activity logs, reports and much more. In the past, however, you couldn't manage permissions from the Tools section of the Data Source Permissions menu. Well, problem solved my fellow RDMers, because now you can! Here's what to do:

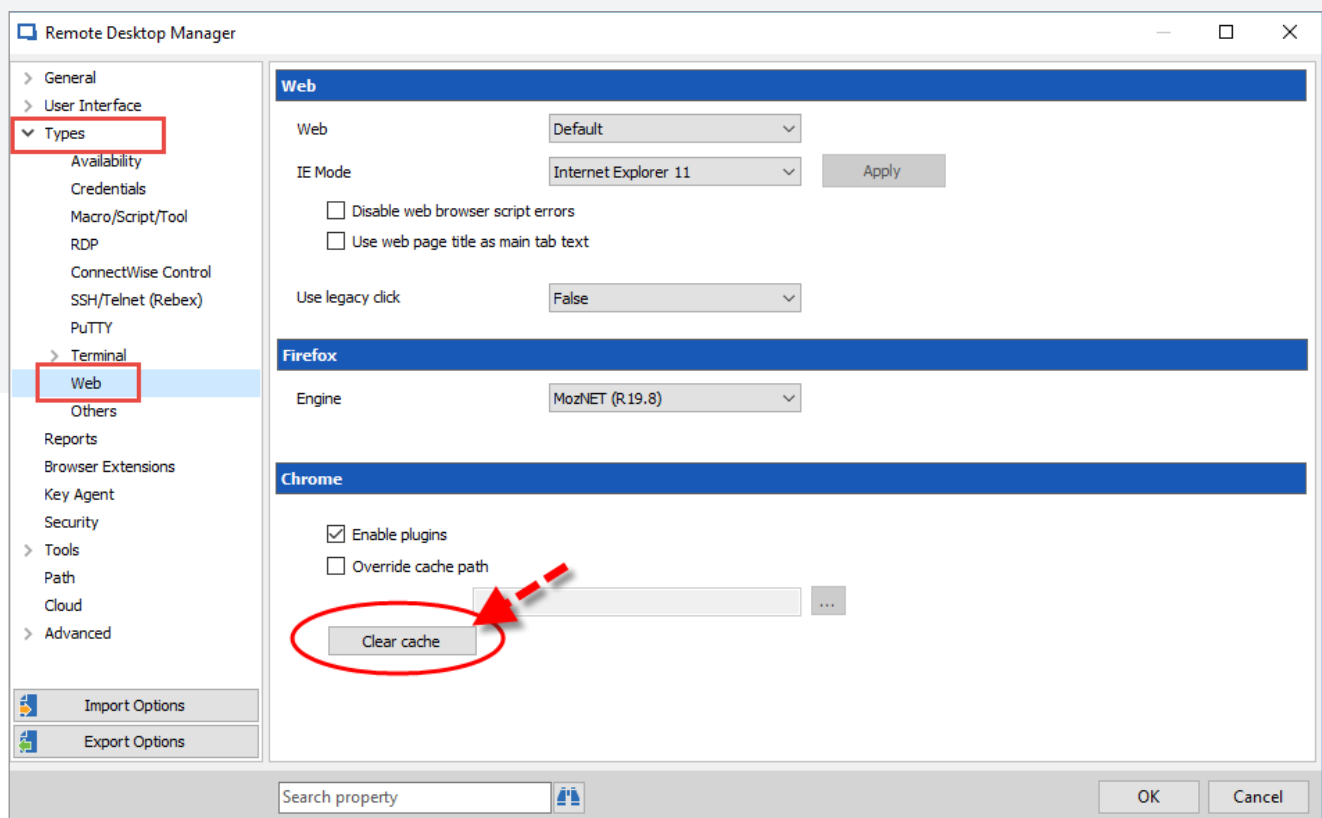
- 1 Go to **Administration - Data Source Permissions**
- 2 Go to **Miscellaneous - Tools** section
- 3 Define the permission level that you wish to attribute to different tools, like macro, remote tools, console, and so on.



Clear Cache

If you're working with web sessions using Chrome as your web browser, you'll be happy to know that we've added a Clear Cache button. Simply click it to clear all of your browsing data directly from RDM in one fell swoop. Here's what to do:

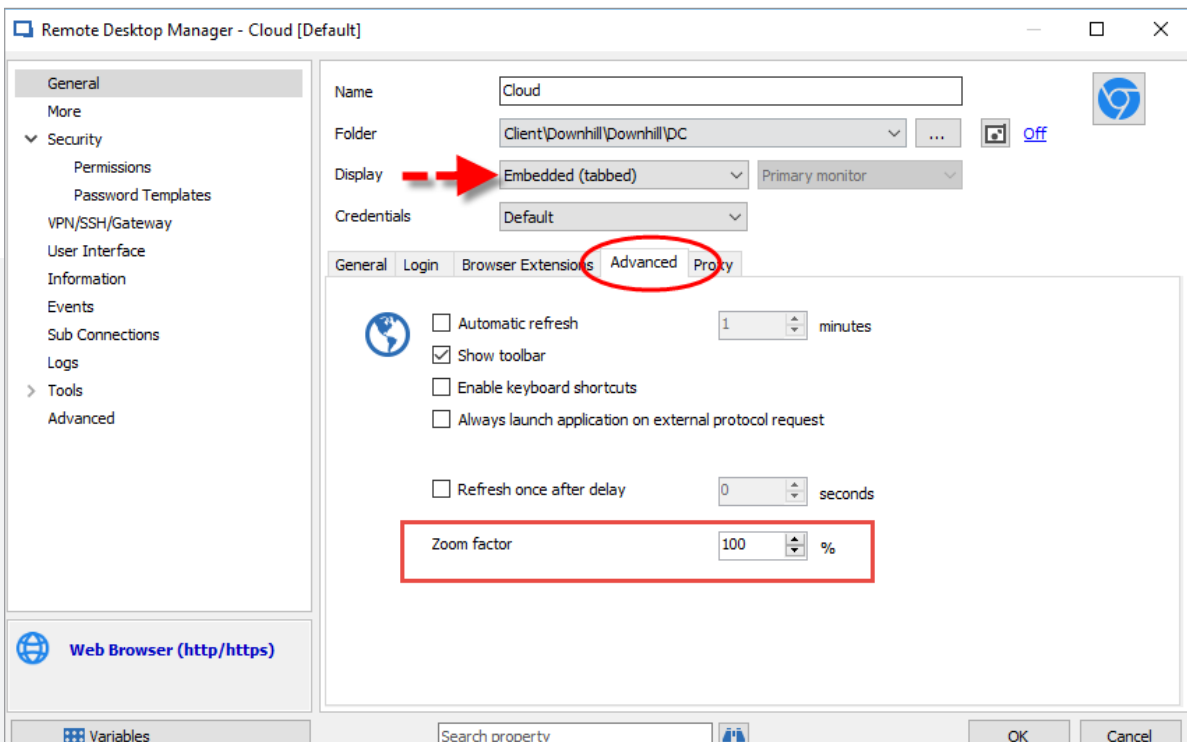
- 1 Go to **File - Options**
- 2 In your Remote Desktop Manager options, go to **Types - Web**
- 3 In the Chrome section, click on **Clear Cache**



Zoom Factor

Some of you wonderful IT pros have told us that when creating a web session in RDM, you'd like to have the option to zoom in or out. Well, ask and ye shall receive! Now in RDM 13.5, when you're using Google Chrome in embedded mode, you can zoom in and out to your heart's desire. Here's the workflow:

- 1 In the **General** tab of your web session, make sure that your Web Browser Application is set to **Google Chrome** and that your Display mode is set to **Embedded (tabbed)**
- 2 Click on the **Advanced** tab
- 3 In **Zoom factor**, set the percentage you wish to use



And there you go! Please note that these are just some of the many new quick access features in RDM 13.5. Next week I'll be looking at the improvements we've made to the repositories. Stay tuned!

As always, please let us know your thoughts by using the comment feature of the blog. You can also visit our forums to get help and submit feature requests, you can find them [here](#).