

## Remote Desktop Manager User Interface and How to Customize your Dashboard



---

### WE WANT TO MAKE IT AS FUNCTIONAL AND VERSATILE FOR YOU AS POSSIBLE

---

Since you're an IT pro, you know that user interface isn't a small detail – it's a big deal, and it makes or breaks a solution. That's why we're obsessive around here about optimizing the RDM user interface and making it work for you instead of against you. We want to make it as functional and versatile for you as possible without clogging or cluttering up your workspace. It's a constant balancing act!

One of the ways we strike this balance is by offering you [3 user interface options](#): Ribbon, Menu and Classic UI.

**Ribbon** - This is my personal favorite, and also the most popular among our users. Most RDM features are accessible, which makes it efficient and user friendly. We'll take a closer look at Ribbon in a moment.

**Menu** - This UI was part of a previous generation, but we wanted to keep it around because we know many of you like it. It has a standard menu for choosing various commands/features.

**Classic UI** - This version offers limited customization, but the trade-off is that it needs minimal system resources to operate.

## A Closer Look at Ribbon

Let's take a closer look at Ribbon's main screen. As you can see from the screenshot, each section/pane offers different features:

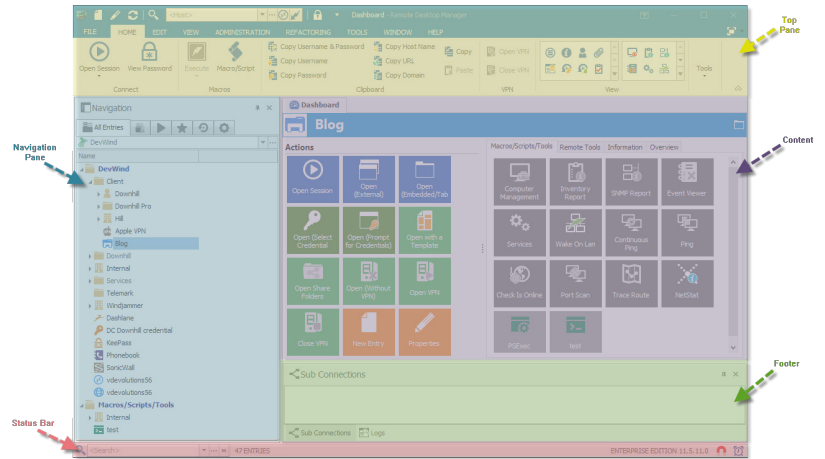
**TOP PANE** – Offers a quick access toolbar with most RDM features

**NAVIGATION PANE** – Holds your tree view with all of your entries

**CONTENT AREA** – Holds various dashboards for managing RDM. One dashboard is active at a time, and this pane also contains your session tabs when opened in embedded mode.

**FOOTER** – Contains the different panes of your selected entry, like the description, sub connection, attachments, etc.

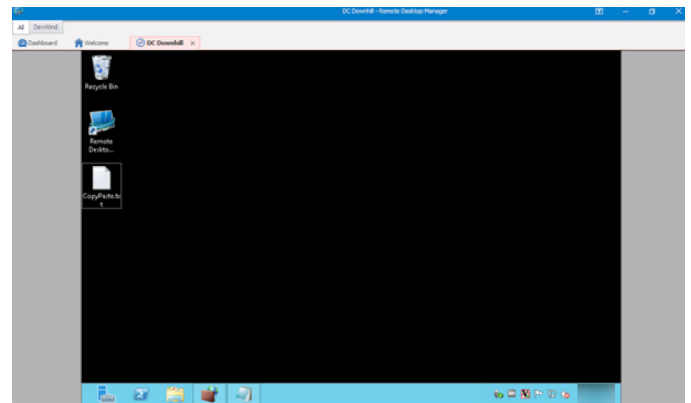
**STATUS BAR** – Contains your search/filter area, RDM version label and notifications.



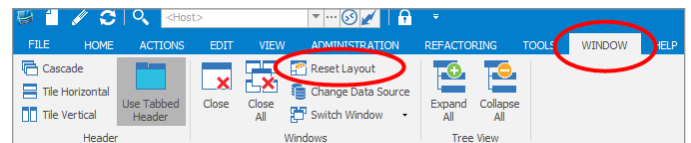
It's not hard to see why Ribbon is the most popular user interface – everything is nearby.

## Customizing Your UI

We've also made it easy for you to customize your RDM user interface. For example, let's say that you launch your sessions in [embedded](#) mode, and therefore want your screen to show your dashboard only. No problem! Simply hide your Footer, Navigation Pane and Top Pane, and voila, you have much more room. Here's what it would look like:



Don't worry: if you get a little bit lost because you've hidden features/options and don't know how to get them back, simply go to **Window – Reset Layout** to reset the layout to its original view.



On top of that, our panels can be reorganized and moved as you prefer. When you start dragging you will see a few acceptable drop destinations appear. This isn't a topic easily covered by a blog post, so we have a video to display that feature in depth. You can find it : [HERE](#).

As always, please let us know your thoughts by using the comment feature of the blog. You can also visit our forums to get help and submit feature requests, you can find them [here](#).